

CONCRETE BLACK

Formato (cm.) Format (inches)	Espesor (mm.) Thickness (inches)	Acabado Finish	Código KEA KEA Code	Código SAP SAP Code
89,5x89,5 / 35 ^{1/4} "x35 ^{1/4} "	11 / 7/16"	Lappato	C229999091	100138767 G466
44,6x89,5 / 17 ^{1/2} "x35 ^{1/4} "	11 / 7/16"	Lappato	C225700031	100143395 G466
59,6x59,6 / 23 ^{1/2} "x23 ^{1/2} "	10,4 / 7/16"	Lappato	C225953871	100130314 G458
29,7x59,6 / 11 ^{3/4} "x23 ^{1/2} "	10,4 / 7/16"	Lappato	C222995561	100130313 G458
89,5x89,5 / 35 ^{1/4} "x35 ^{1/4} "	11 / 7/16"	Nature	C229999171	100140997 G486
44,6x89,5 / 17 ^{1/2} "x35 ^{1/4} "	11 / 7/16"	Nature	C225700061	100143396 G486
59,6x59,6 / 23 ^{1/2} "x23 ^{1/2} "	10,4 / 7/16"	Nature	C225953861	100130316 G494
29,7x59,6 / 11 ^{3/4} "x23 ^{1/2} "	10,4 / 7/16"	Nature	C222995551	100130315 G494



Lappato R9A

Nature R9A

CONCRETE BLACK TIMBER

Formato (cm.) Format (inches)	Espesor (mm.) Thickness (inches)	Acabado Finish	Código KEA KEA Code	Código SAP SAP Code
22x90 / 8 ^{5/8} "x35 ^{3/8} "	10,4 / 7/16"	Nature	C227800001	100138806 G486
22x90 / 8 ^{5/8} "x35 ^{3/8} "	10,4 / 7/16"	T. Anti-slip	C227800051	100143839 G486

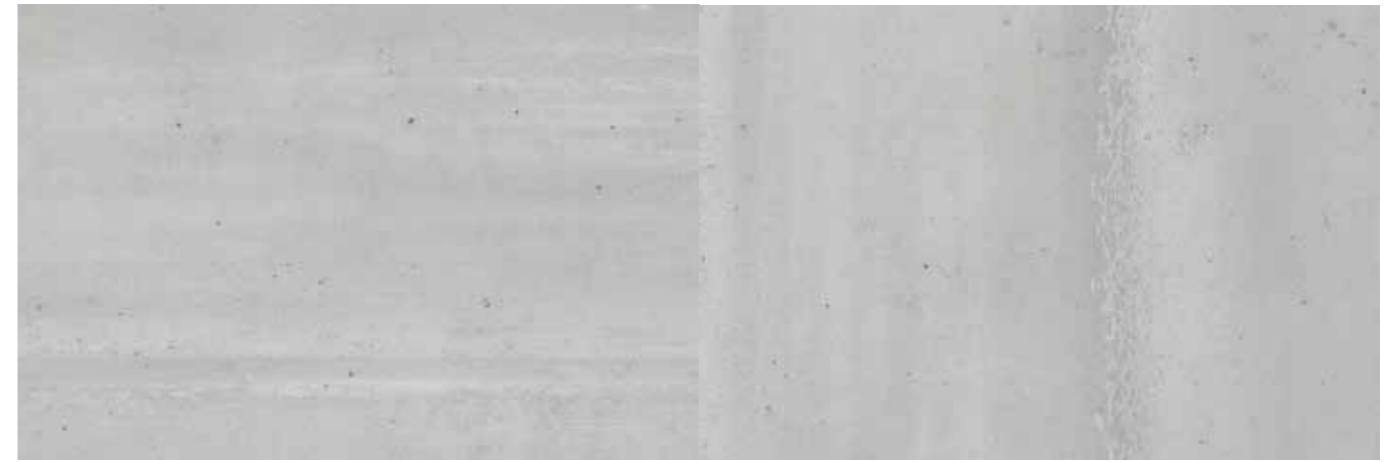


Timber Nature R10A

Timber Anti-slip R12C

CONCRETE GREY

Formato (cm.) Format (inches)	Espesor (mm.) Thickness (inches)	Acabado Finish	Código KEA KEA Code	Código SAP SAP Code
89,5x89,5 / 35 ^{1/4} "x35 ^{1/4} "	11 / 7/16"	Lappato	C229999071	100138768 G466
44,6x89,5 / 17 ^{1/2} "x35 ^{1/4} "	11 / 7/16"	Lappato	C225700011	100143375 G466
59,6x59,6 / 23 ^{1/2} "x23 ^{1/2} "	10,4 / 7/16"	Lappato	C225953841	100130310 G457
29,7x59,6 / 11 ^{3/4} "x23 ^{1/2} "	10,4 / 7/16"	Lappato	C222995581	100130309 G457
89,5x89,5 / 35 ^{1/4} "x35 ^{1/4} "	11 / 7/16"	Nature	C229999111	100138769 G486
44,6x89,5 / 17 ^{1/2} "x35 ^{1/4} "	11 / 7/16"	Nature	C225700051	100143381 G486
59,6x59,6 / 23 ^{1/2} "x23 ^{1/2} "	10,4 / 7/16"	Nature	C225953851	100130312 G453
29,7x59,6 / 11 ^{3/4} "x23 ^{1/2} "	10,4 / 7/16"	Nature	C222995571	100130311 G453



Lappato R9A

Nature R9A

CONCRETE GREY TIMBER

Formato (cm.) Format (inches)	Espesor (mm.) Thickness (inches)	Acabado Finish	Código KEA KEA Code	Código SAP SAP Code
22x90 / 8 ^{5/8} "x35 ^{3/8} "	10,4 / 7/16"	Nature	C227800011	100138807 G486
22x90 / 8 ^{5/8} "x35 ^{3/8} "	10,4 / 7/16"	T. Anti-slip	C227800041	100143900 G486



Timber Nature R10A

Timber Anti-slip R12C

CONCRETE BEIGE

Formato (cm.) Format (inches)	Espesor (mm.) Thickness (inches)	Acabado Finish	Código KEA KEA Code	Código SAP SAP Code
89,5x89,5 / 35 ^{1/4} "x35 ^{1/4} "	11 / 7/16"	Lappato	C229999121	100138820 G466
44,6x89,5 / 17 ^{1/2} "x35 ^{1/4} "	11 / 7/16"	Lappato	C225700001	100143373 G466
59,6x59,6 / 23 ^{1/2} "x23 ^{1/2} "	10,4 / 7/16"	Lappato	C226000421	100139189 G458
29,7x59,6 / 11 ^{3/4} "x23 ^{1/2} "	10,4 / 7/16"	Lappato	C220407971	100145399 G458
89,5x89,5 / 35 ^{1/4} "x35 ^{1/4} "	11 / 7/16"	Nature	C229999141	100138821 G486
44,6x89,5 / 17 ^{1/2} "x35 ^{1/4} "	11 / 7/16"	Nature	C225700041	100143374 G486
59,6x59,6 / 23 ^{1/2} "x23 ^{1/2} "	10,4 / 7/16"	Nature	C226000411	100139310 G494
29,7x59,6 / 11 ^{3/4} "x23 ^{1/2} "	10,4 / 7/16"	Nature	C220407981	100145400 G494



CONCRETE BEIGE TIMBER

Formato (cm.) Format (inches)	Espesor (mm.) Thickness (inches)	Acabado Finish	Código KEA KEA Code	Código SAP SAP Code
22x90 / 8 ^{5/8} "x35 ^{3/8} "	10,4 / 7/16"	Nature	C227800021	100138808 G486
22x90 / 8 ^{5/8} "x35 ^{3/8} "	10,4 / 7/16"	T. Anti-slip	C227800031	100143838 G486



Lappato R9A

Nature R9A



Timber Nature R10A

Timber Anti-slip R12C